



Whilst every effort is made to give a fair description, the accuracy of these particulars is not guaranteed, neither do they constitute an offer or contract.

MATHESONS ESTATE AGENTS have not tested any apparatus, equipment, fitting or services and so cannot verify that they are in working order. The buyer is advised to obtain verification from their solicitor or surveyor. Measurements are correct to within +/- 6 A sonic tape is used. None of the statements contained in these particulars or any of our properties are to be relied upon as a representation of fact.

166 Manor Park Road
Harlesden
London
NW10 4JT
T: 020 8965 2250
E: sales@mathesonsestates.com
www.mathesonsestates.com



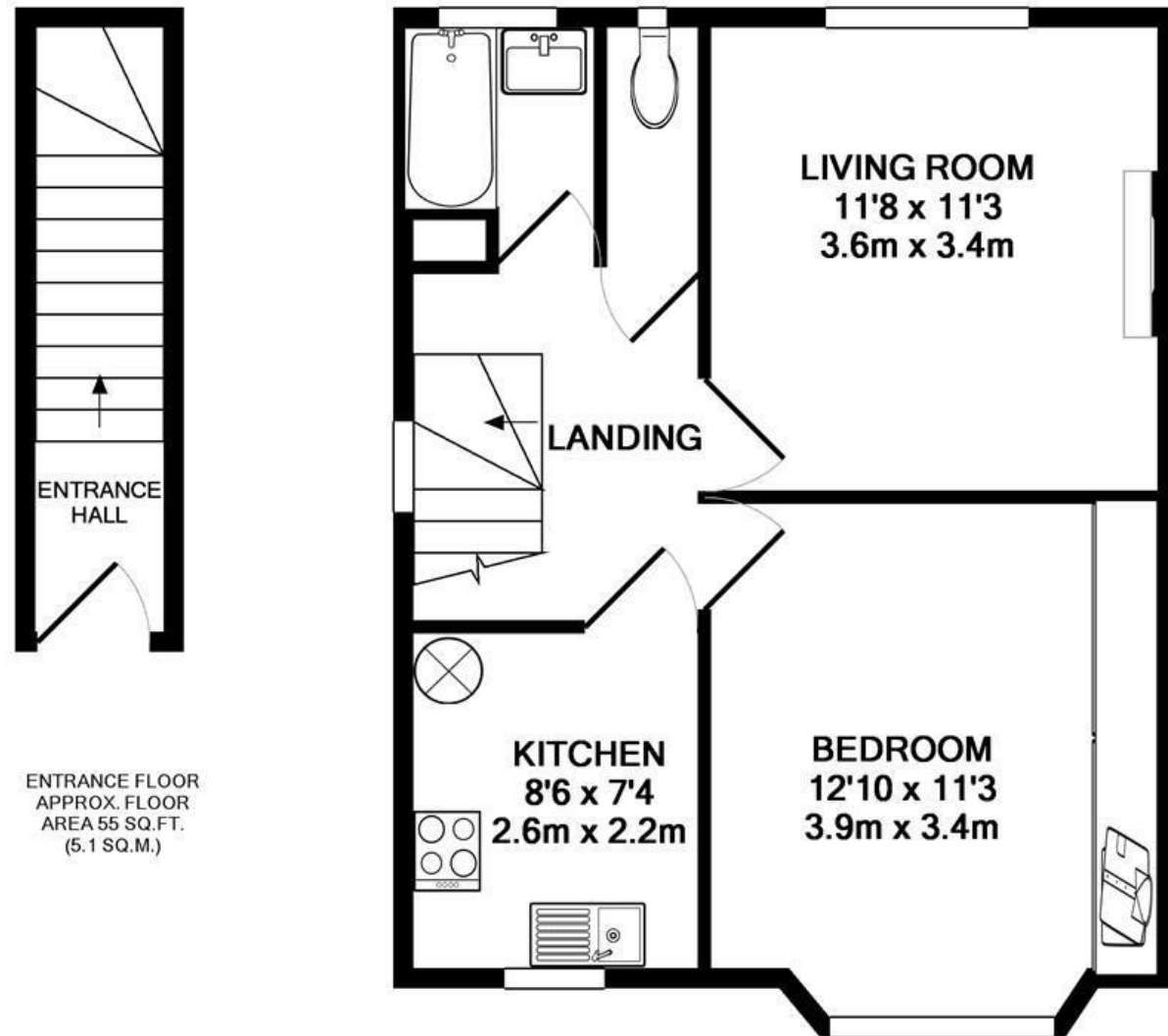
Tokington Avenue, Wembley, Middlesex HA9 6HL Chain Free £284,950 Leasehold



KEY FEATURES:

- Stunning Apartment
- No Chain
- Great Buy to Let
- First Floor Flat
- Brand New 125 year Lease
- Close to Station
- Offers Invited
- Must be seen
- OPEN HOUSE THIS SATURDAY
- View 25/2/17 at 10 am

A newly renovated one double bedroom luxury apartment benefiting from a large reception with a separate fully fitted kitchen. The property is offered for sale with no on wards chain and must be viewed internally. Other benefits include a brand new 125 year lease . Located in an enviable location on one of the areas premier roads. Underground station (Zone 3 - Bakerloo and London Overground Lines). Keys in office!



ENTRANCE FLOOR
APPROX. FLOOR
AREA 55 SQ.FT.
(5.1 SQ.M.)

1ST FLOOR
APPROX. FLOOR
AREA 441 SQ.FT.
(41.0 SQ.M.)

TOTAL APPROX. FLOOR AREA 496 SQ.FT. (46.0 SQ.M.)

Whilst every attempt has been made to ensure the accuracy of the floor plan contained here, measurements of doors, windows, rooms and any other items are approximate and no responsibility is taken for any error, omission, or mis-statement. This plan is for illustrative purposes only and should be used as such by any prospective purchaser. The services, systems and appliances shown have not been tested and no guarantee as to their operability or efficiency can be given
Made with Metropix ©2016

